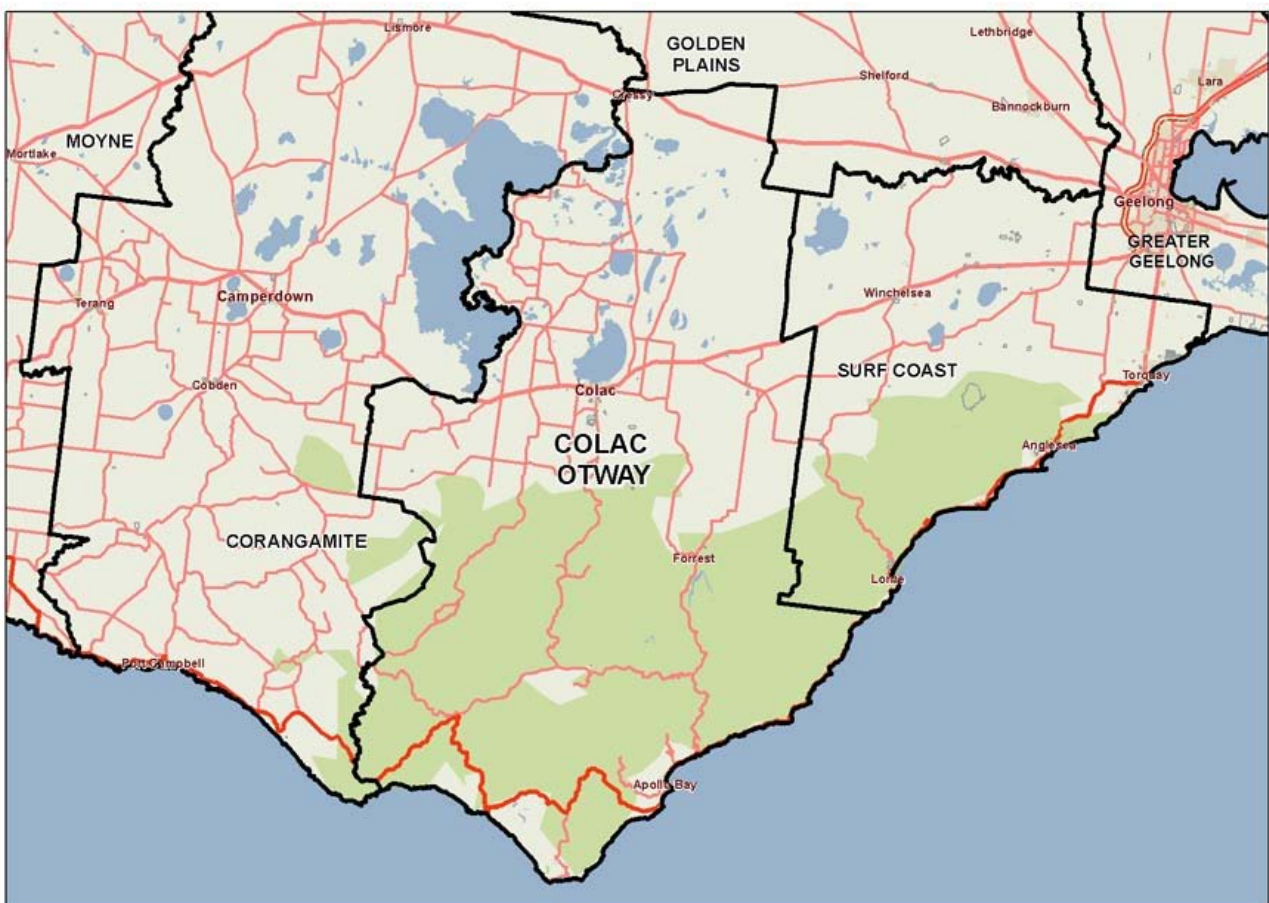


Colac-Otway (S)



Colac is located about 140 km south-west of Melbourne, 70 km south-west of Geelong, and 100 km south of Ballarat. Population growth since 2001 has been negative, while projected growth to 2021 is slightly above average. The age distribution in Colac-Otway is slightly older than the state average. The fertility rate is one of the highest in the state but the rate of new settler arrivals is well below the Victorian average. Median income is well below the Victorian measure, but food insecurity is the second lowest in the state, and rates of mortgage and rental stress are around average. Colac-Otway rates near the Victorian average for most indicators of health status with lower than average levels of persons indicating that they have fair or poor health status or high levels of psychological stress, and low incidence of type 2 diabetes. The percentage of persons who have purchased alcohol in the last week is relatively high, as is the percentage who drink soft drink every day. The rate of acute ambulatory care sensitive conditions is higher than average, while the rate of growth in inpatient hospital separations between 2002 and 2012 was considerably lower than the Victorian average. The rate of Emergency Department presentations is the lowest for all LGAs at less than 20% of the Victorian average and GP attendances are also below average. The rate of unintentional injuries treated in hospital is the lowest in the state, and the rate of intentional injuries is the third lowest. The rates of HACC and drug and alcohol clients are higher than the Victorian average.



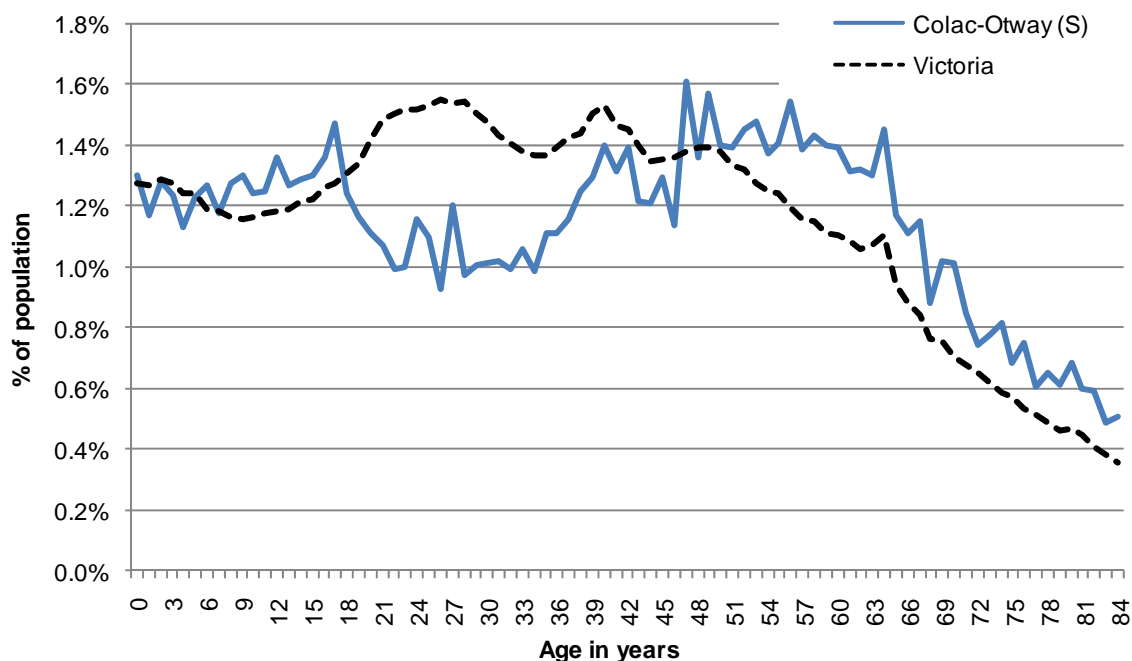
1 Community capacity

Geography

Metropolitan/rural			Rural
Departmental region			Barwon-South Western
Area of LGA			3,439 km
ASGS LGA code			21750
Most populous community in LGA			Colac
	Distance to Melbourne	149 km	
	Travel time to Melbourne	1 hour 56 minutes	
Remoteness area			Inner Regional Australia
ARIA measures (low/average/high)			(1.13 / 2.06 / 3.57)
Business land use	<1%	Industrial land use	<1%
Residential land use	<1%	Rural land use	63.6%
Other land use	35.7%		

Demographics

2011 population profile



Per annum population change

Time period	LGA	Victoria
2001–2011, actual change	-0.21%	1.42%
2011–2021, projected change	1.71%	1.62%

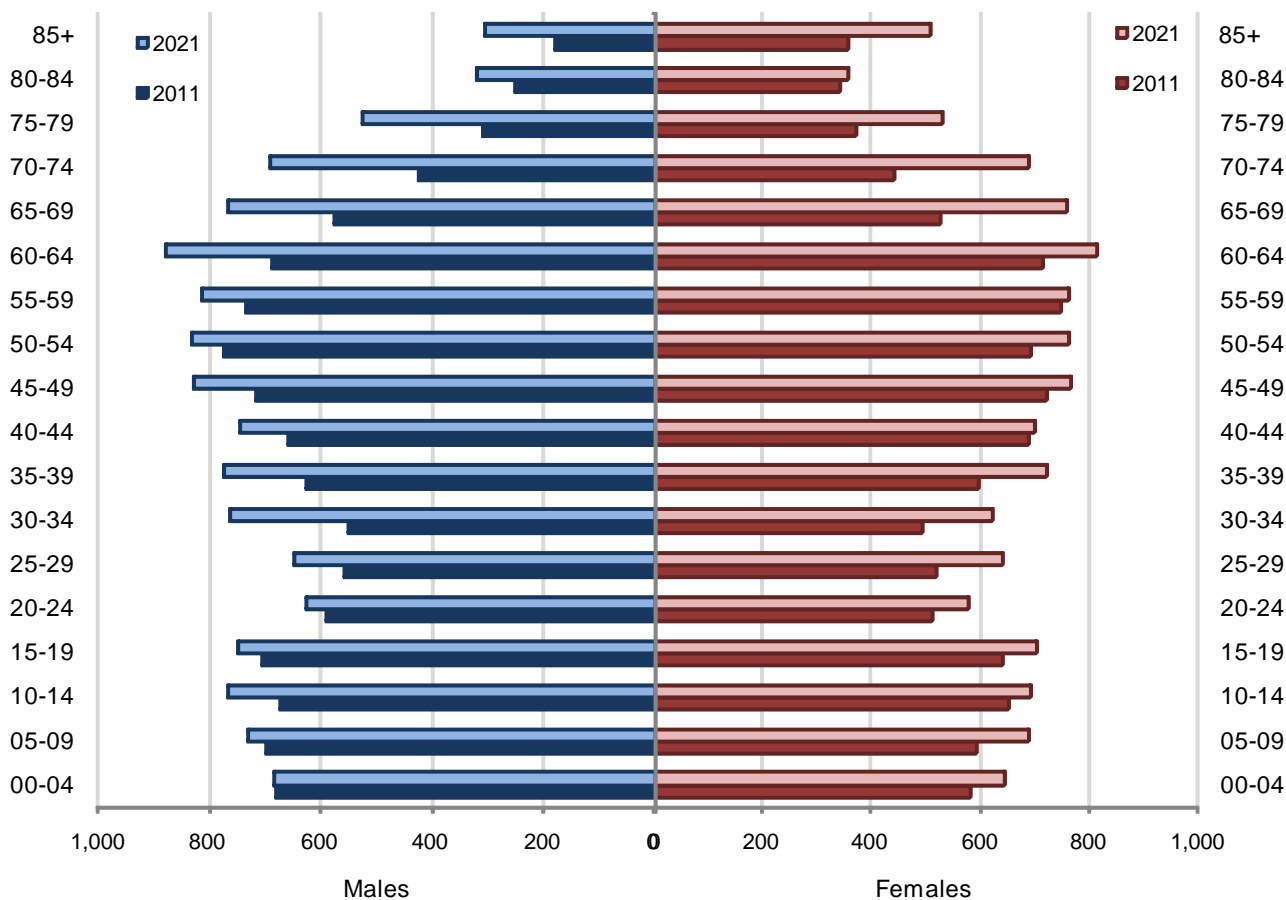
2011 population by age and sex

	Females	Males	Total	% total LGA population	% total VIC population
0–14	1,830	2,046	3,876	18.8%	18.2%
15–24	1,155	1,293	2,448	11.9%	13.9%
25–44	2,303	2,388	4,691	22.8%	29.1%
45–64	2,876	2,907	5,783	28.1%	24.8%
65–84	1,684	1,561	3,245	15.8%	12.1%
85+	358	177	535	2.6%	1.9%
Total	10,206	10,372	20,578	100%	100%

Fertility rate

	LGA measure	Rank among LGAs	Victoria measure
Total fertility rate	2.35	7	1.79

Population projections by age group and sex, 2011 and 2021



Diversity

	LGA measure	Rank among LGAs	Victoria measure
Aboriginal and Torres Strait Islander population	0.94%	34	0.74%
Percentage of population born overseas	7.9%	65	27.7%
Percentage of population born in non-English speaking country	3.6%	64	20.9%
Top 5 overseas countries of birth	United Kingdom (3.0% of total population) New Zealand (1.1%) Italy (<1%) Netherlands (<1%) Germany (<1%)		
Percentage speaking language other than English at home	3.2%	57	24.2%
Top 5 languages spoken other than English	Italian (<1% of total population) Mandarin (<1%) Arabic (<1%) German (<1%) Greek (<1%)		
Percentage with low English proficiency	0.6%	43	4.0%
New settler arrivals per 100,000 population	170.1	40	656.3
Humanitarian arrivals as a percentage of new settlers	25.7%	13	12.3%
Community acceptance of diverse cultures	52.0%	21	50.6%

Social engagement and crime

	LGA measure	Rank among LGAs	Victoria measure
Index of Relative Socio-Economic Disadvantage	967.3	18	-
Percentage of households with broadband internet	60.9%	66	72.6%
Gaming machine losses per head of adult population	\$435	44	\$602
Family incidents per 1,000 population	8.3	40	9.1
Drug usage and possession offences per 1,000 population	3.6	22	3.4
Total offences per 1,000 population	65.4	33	70.6
Percentage who feel safe walking alone during the day	99.0%	24	97.0%
Percentage who feel safe on street alone after dark	75.6%	45	69.3%
Percentage who help out as a volunteer	26.5%	32	19.3%
Participation in citizen engagement in last year	67.8%	14	50.5%
Social networking used to organise time with family/friends	28.4%	46	35.1%
Percentage who believe there are good facilities and services in the LGA	75.4%	57	85.2%

2 Socio-economic factors

Economic and employment characteristics

	LGA measure	Rank among LGAs	Victoria measure
Unemployment rate	5.5%	27	5.4%
Percentage of individuals with income less than \$400 per week	41.8%	37	39.9%
Percentage of females with income less than \$400 per week	49.0%	–	47.1%
Percentage of males with income less than \$400 per week	34.3%	–	32.1%
Percentage of families headed by one parent	14.8%	42	15.5%
Proportion who are female	80.7%	–	82.8%
Proportion who are male	19.3%	–	17.2%
Median household income	\$914	51	\$1,216
Percentage of low income families with children	1.3%	60	1.8%
Percentage of population with food insecurity	2.3%	78	5.6%

Housing, transport and sustainability characteristics

	LGA measure	Rank among LGAs	Victoria measure
Mortgage stress	12.3%	29	11.4%
Rental stress	24.1%	45	25.1%
Percentage of rental housing that is affordable	65.0%	32	20.7%
Median house price	\$247,000	54	\$380,000
Median rent for three bedroom home	\$265	46	\$320
New dwellings approved per 1,000 population	5.4	52	8.9
Social housing as a percentage of total dwellings	3.3%	38	3.8%
Persons with at least 2 hour daily commute	–	–	11.6%
Percentage of dwellings with no motor vehicle	6.7%	37	8.7%
Passenger vehicles per 1,000 population	617.8	42	606.7
Percentage of passenger vehicles more than ten years old	58.5%	8	47.7%

Education characteristics

	LGA measure	Rank among LGAs	Victoria measure
Full-time equivalent students	3,387.7	-	869,697.7
Percentage of year 9 students who attain national minimum standards in reading	89.1%	62	92.3%
Percentage of year 9 students who attain national minimum standards in writing	84.1%	63	89.4%
Percentage of year 9 students who attain national minimum standards in numeracy	94.5%	43	94.4%
Percentage of persons who did not complete year 12	63.9%	21	43.7%
Percentage of persons who completed a higher education qualification	26.2%	60	45.7%
Percentage of students attending government school	56.3%	68	61.6%

3 Health and wellbeing

Health conditions

	LGA measure	Rank among LGAs	Victoria measure
Low birth weight babies	5.0%	72	6.6%
Percentage of persons reporting asthma	10.5%	41	10.7%
Percentage of persons reporting type 2 diabetes	2.8%	73	4.8%
Percentage of persons overweight or obese	50.8%	48	48.6%
Percentage of females overweight or obese	44.6%	42	40.3%
Percentage of males overweight or obese	57.5%	48	57.2%
Cancer incidence per 100,000 population	6.9	-	5.1
Cancer incidence per 100,000 females	6.8	-	4.5
Cancer incidence per 100,000 males	7.1	-	5.7
Ambulatory Care Sensitive Conditions (ACSC) – acute admissions per 1,000 population	15.7	29	14.5
ACSC – chronic admissions per 1,000 population	13.5	67	17.0
ACSC – vaccine preventable admissions per 1,000 population	0.6	61	0.8
Notifications of Pertussis per 1,000 population	0.7	73	1.6
Notifications of Influenza per 1,000 population	0.1	68	0.6
Notifications of Chlamydia per 1,000 population	3.0	41	3.5

Health behaviours

	LGA measure	Rank among LGAs	Victoria measure
Percentage of persons 18+ who are current smokers	21.5%	25	19.1%
Percentage of females 18+ who are current smokers	21.9%	18	16.9%
Percentage of males 18+ who are current smokers	23.3%	26	21.4%
Percentage of persons who support smoking ban in outside seating area	68.6%	44	69.8%
Percentage of persons at risk of short-term harm from alcohol consumption	11.7%	35	10.2%
Percentage of persons who purchased alcohol in the past 7 days	48.7%	4	36.3%
Percentage of persons who do not meet fruit and vegetable dietary guidelines	52.1%	21	48.2%
Percentage of females who do not meet fruit and vegetable dietary guidelines	42.6%	41	41.9%
Percentage of males who do not meet fruit and vegetable dietary guidelines	59.3%	23	54.8%
Percentage of persons who drink soft drink every day	19.8%	2	12.4%
Percentage of persons who share a meal with family at least 5 days per week	66.3%	56	66.3%
Percentage of persons who do not meet physical activity guidelines	26.1%	42	27.4%
Percentage of females who do not meet physical activity guidelines	28.0%	28	27.2%
Percentage of males who do not meet physical activity guidelines	17.6%	71	27.5%
Percentage of persons who sit for at least 7 hours per day	23.5%	51	32.6%
Percentage of persons who visit a green space at least once per week	46.9%	44	50.7%
Percentage of infants fully breastfed at three months	56.8%	27	51.8%
Percentage of children fully immunised at 24–27 months	98.1%	6	93.4%
Breast cancer screening participation	59.9%	18	54.7%
Cervical cancer screening participation	66.9%	9	60.7%
Bowel cancer screening participation	38.9%	40	37.1%

Aged and disability characteristics

	LGA measure	Rank among LGAs	Victoria measure
Percentage of population with need for assistance with core activity	6.3%	20	5.0%
People with severe and profound disability living in the community	4.2%	37	3.8%
Disability support pension recipients per 1,000 eligible population	89.6	16	55.7
Percentage of persons aged 75+ who live alone	41.6%	12	35.9%
Proportion who are female	76.4%	–	73.9%
Proportion who are male	23.6%	–	26.1%
Aged care places (high care) per 1,000 eligible population	45.9	20	42.2
Aged care places (low care) per 1,000 eligible population	62.1	6	45.7
Age pension recipients per 1,000 eligible population	722.9	48	704.5

Life expectancy and wellbeing

	LGA measure	Rank among LGAs	Victoria measure
Male life expectancy	78.3	54	80.3
Female life expectancy	83.7	46	84.4
Percentage persons reporting fair or poor health	17.4%	41	18.3%
Percentage of females reporting fair or poor health	16.0%	48	17.5%
Percentage of males reporting fair or poor health	13.8%	68	19.2%
Percentage of persons reporting a high/very high degree of psychological distress	8.7%	71	11.4%
Percentage of persons sleeping less than 7 hours per day	28.7%	51	31.5%
Percentage persons with adequate work-life balance	56.8%	14	53.1%
Percentage of children developmentally vulnerable in one or more domains	23.7%	19	20.3%
Percentage of children developmentally vulnerable in two or more domains	12.9%	19	10.0%

Injury and mortality

	LGA measure	Rank among LGAs	Victoria measure
Unintentional injuries treated in hospital per 1,000 population	23.7	79	61.7
Intentional injuries treated in hospital per 1,000 population	1.4	77	3.8
Percentage of unintentional injuries due to falls	39.3%	25	37.6%
Indirect standardised death rate per 100,000 population	6.7	7	5.7
Avoidable deaths per 100,000 population, 0–74 years, due to all causes	179.3	30	158.2
Avoidable deaths per 100,000 population, 0–74 years, due to cancer	58.9	59	61.4
Avoidable deaths per 100,000 population, 0–74 years, due to cardiovascular diseases	40.9	46	39.8
Avoidable deaths per 100,000 population, 0–74 years, due to respiratory diseases	11.1	27	8.4

4 Service system

Services and access

	LGA measure	Rank among LGAs	Victoria measure
Medicare Local that LGA is located in		Barwon	
Primary care partnership		G21 Health and Wellbeing Pillar	
Number of hospitals/health services	2	–	294
General practitioners per 1,000 population	1.13	39	1.18
General practice clinics per 1,000 population	0.39	67	0.54
Dental service sites per 1,000 population	0.15	48	0.21
Allied health service sites per 1,000 population	0.73	27	0.56
Pharmacies per 1,000 population	0.19	45	0.20
Number of schools	17	–	2,238
Percentage of population near to public transport	41.2%	46	74.3%
Percentage of population with private health insurance	36.6%	53	48.0%

Hospital utilisation

	LGA measure	Rank among LGAs	Victoria measure
Hospital inpatient separations per 1,000 population	412.1	61	425.5
Percentage of inpatient separations in private hospital	19.5%	58	37.0%
Main public hospital attended	Colac Area Health		
Separations from most frequently attended public hospital	63.6%	20	–
Average length of stay, public hospital inpatients (days)	3.13	33	3.05
Average length of stay, total hospital inpatients (days)	2.99	29	2.87
Per annum change in hospital inpatient separations, 2001–02 to 2011–12	0.91%	76	3.68%
Projected per annum change in separations, 2011–12 to 2021–22	1.74%	54	2.72%
Ambulatory care sensitive conditions (ACSC) – admission rate per 1,000 population	29.4	59	31.9
ACSC – average length of stay (days)	4.69	63	5.21
Emergency department presentations per 1,000 population	47.3	79	259.6
Primary care type presentations to emergency, per 1,000 population	13.1	79	112.3

Other service utilisation

	LGA measure	Rank among LGAs	Victoria measure
GP attendances per 1,000 population – male	3,826.7	55	4,573.8
GP attendances per 1,000 population – female	5,197.4	61	6,197.5
GP attendances per 1,000 population – total	4,497.0	59	5,390.8
HACC clients aged 0–69 per 1,000 target population	340.3	16	196.9
HACC clients aged 70 and over per 1,000 target population	455.3	22	339.6
Drug and alcohol clients per 1,000 population	9.2	13	5.1
Registered mental health clients per 1,000 population	11.6	34	10.3