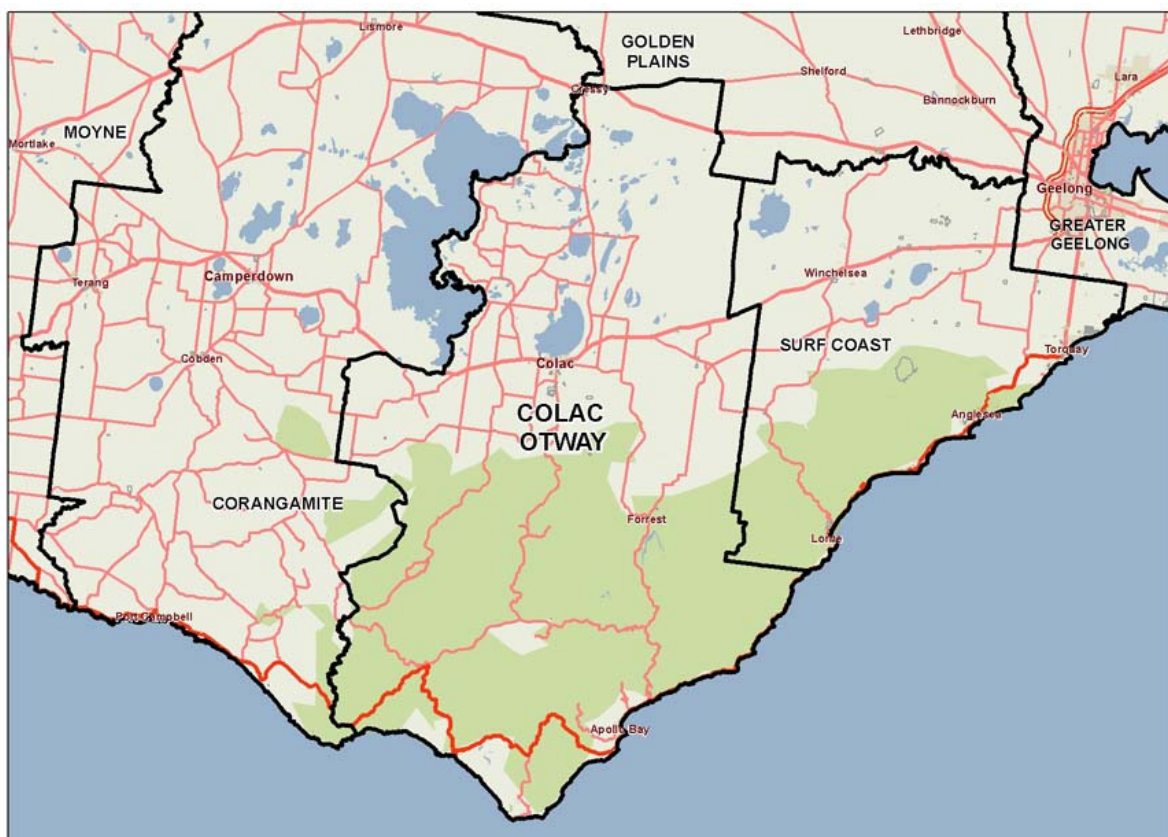


Colac-Otway (S)



Colac-Otway is located about 140 km south-west of Melbourne, 70 km south-west of Geelong, and 100 km south of Ballarat. Population growth since 2002 has been negligible, while projected growth to 2022 is well below average. The age distribution in Colac-Otway is older than the state average although the percentage of 0 to 14 year olds is slightly higher than average. The fertility rate is one of the highest in the state but the population is much less culturally diverse than the Victorian average. Median income is well below the Victorian measure, real estate prices and rents are relatively low, and rates of mortgage and rental stress are around average. Colac-Otway rates near the Victorian average for most indicators of health status, although cancer incidence is higher than average, as is the percentage of persons at short term risk of harm from alcohol consumption. The rate of acute ambulatory care sensitive conditions is higher than average, while the rate of growth in inpatient hospital separations between 2003 and 2013 was considerably lower than the Victorian average. The rate of Emergency Department presentations is the lowest of all LGAs at less than 20% of the Victorian average, and GP attendances are also below average. The rate of unintentional injuries treated in hospital is the second lowest in the state, and the rate of intentional injuries is the fourth lowest. The rates of HACC and drug and alcohol clients are higher than the Victorian average.



1 Community capacity

Geography

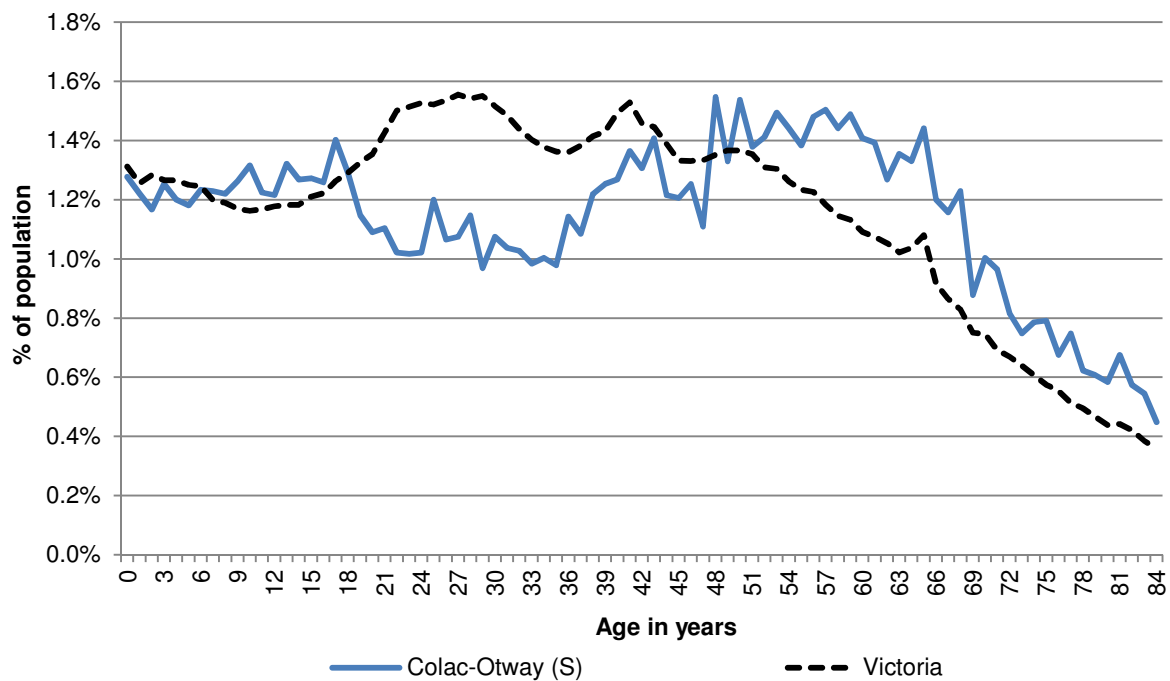
Metropolitan/rural	Colac-Otway (S)
Departmental region	Barwon-South Western
Area of LGA	3,439 km ²
ASGS LGA code	21750
Most populous community in LGA	Colac
Distance to Melbourne	149 km
Travel time to Melbourne	1 hour 56 minutes
Remoteness area	Inner Regional Australia
ARIA measures (low/average/high)	(1.16 / 2.09 / 3.62)

Land use

Business	0.0%	Industrial	0.1%
Residential	0.5%	Rural	63.6%
Other	35.7%		

Demographics

2012 population profile



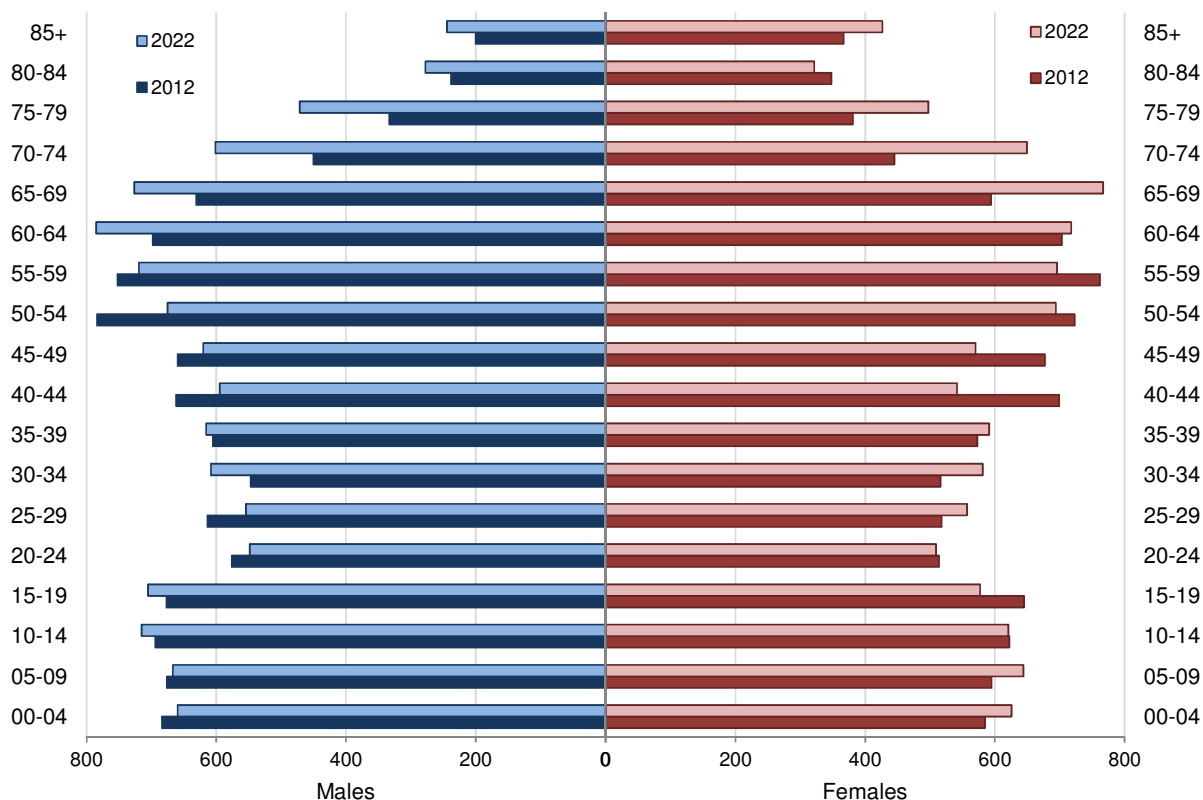
Per annum population change

Time period	LGA	Victoria
2002–2012, Percentage of actual change	0.02%	1.57%
2012–2022, Percentage of projected change	0.31%	1.58%

2012 population by age and sex

	Females	Males	Total	% total LGA population	% total VIC population
00–14	1,800	2,053	3,853	18.6%	18.3%
15–24	1,158	1,252	2,410	11.6%	13.6%
25–44	2,303	2,426	4,728	22.8%	29.2%
45–64	2,859	2,890	5,748	27.7%	24.5%
65–84	1,767	1,649	3,416	16.5%	12.4%
85+	367	200	567	2.7%	2.0%
Total	10,253	10,469	20,722	100.0%	100.0%

Population projections by age group and sex, 2012 and 2022



Fertility rate

	LGA measure	Rank among LGAs	Victoria measure
Total fertility rate	2.40	7	1.82
Teenage fertility rate	12.42	35	10.38

Diversity

	LGA measure	Rank among LGAs	Victoria measure
Aboriginal and Torres Strait Islander population	1.1%	33	0.8%
Percentage of population born overseas	7.9%	65	27.7%
Percentage of population born in non-English speaking country	3.6%	64	20.9%
Top 5 overseas countries of birth	United Kingdom 3.0% New Zealand 1.1% Italy 0.4% Netherlands 0.4% Germany 0.3%		
Percentage speaking language other than English at home	3.2%	57	24.2%
Top 5 languages spoken other than English	Italian 0.5% Mandarin 0.3% Arabic 0.2% German 0.2% Greek 0.2%		
Percentage with low English proficiency	0.6%	43	4.0%
Top 5 ancestries	English 39.6% Australian 31.8% Irish 9.1% Scottish 4.8% Italian 1.8%		
New settler arrivals per 100,000 population	333.0	38	1,415.1
Humanitarian arrivals as a percentage of new settlers	15.9%	11	7.2%
Community acceptance of diverse cultures	52.0%	21	50.6%

Social engagement and crime

	LGA measure	Rank among LGAs	Victoria measure
Index of Relative Socio-Economic Disadvantage	965	21	NA
Percentage of households with broadband internet	60.9%	66	72.6%
Gaming machine losses per head of adult population	\$406.3	44	\$549.5
Family incidents per 1,000 population	13.3	24	10.8
Drug usage and possession offences per 1,000 population	3.2	41	3.8
Total offences per 1,000 population	61.7	42	72.2
Percentage who feel safe walking alone during the day	99.0%	24	97.0%
Percentage who feel safe on street alone after dark	75.6%	45	70.3%
Percentage who help out as a volunteer	26.5%	32	19.3%
Participation in citizen engagement in last year	67.8%	14	50.5%
Social networking used to organise time with family/friends	28.4%	46	35.1%
Percentage who believe there are good facilities and services in the LGA	75.4%	57	85.2%

2 Socio-economic factors

Economic and employment characteristics

	LGA measure	Rank among LGAs	Victoria measure
Unemployment rate	5.6%	30	5.8%
Percentage of individuals with income less than \$400 per week	41.8%	37	39.9%
Percentage of females with income less than \$400 per week	49.0%	41	47.1%
Percentage of males with income less than \$400 per week	34.3%	40	32.1%
Percentage of families headed by one parent	14.8%	42	15.5%
Proportion who are female	80.7%	59	82.8%
Proportion who are male	19.3%	21	17.2%
Median household income	\$914	51	\$1,216
Percentage of low income families with children	9.9%	29	8.7%
Percentage of population with food insecurity	4.6%	38	4.6%

Housing, transport and sustainability characteristics

	LGA measure	Rank among LGAs	Victoria measure
Mortgage stress	12.3%	29	11.4%
Rental stress	24.1%	45	25.1%
Percentage of rental housing that is affordable	72.7%	22	18.4%
Median house price	\$248,000	54	\$412,000
Median rent for three bedroom home	\$260	49	\$320
New dwellings approved per 1,000 population	5.1	48	8.6
Social housing as a percentage of total dwellings	3.3%	38	3.8%
Number of social housing dwellings	357	NA	84,037
Percentage of work journeys which are by car	67.1%	45	66.2%
Percentage of work journeys which are by public transport	0.7%	60	11.1%
Persons with at least 2 hour daily commute	NA	NA	11.6%
Percentage of dwellings with no motor vehicle	6.7%	37	8.7%
Passenger vehicles per 1,000 population	617.8	42	606.8
Percentage of passenger vehicles more than ten years old	58.5%	8	47.7%

Education characteristics

	LGA measure	Rank among LGAs	Victoria measure
Full-time equivalent students	3,388	NA	869,698
Percentage of year 9 students who attain national minimum standards in literacy	92.7%	53	93.5%
Percentage of year 9 students who attain national minimum standards in numeracy	92.3%	65	95.0%
Percentage of 19 year olds completing year 12	92.9%	10	84.2%
Percentage of persons who did not complete year 12	63.9%	21	43.7%
Percentage of persons who completed a higher education qualification	26.2%	60	45.7%
Percentage of students attending government school	56.3%	68	61.6%

3 Health and wellbeing

Health conditions

	LGA measure	Rank among LGAs	Victoria measure
Percentage of persons reporting asthma	9.3%	67	10.9%
Percentage of persons reporting type 2 diabetes	5.0%	37	5.0%

Percentage of persons reporting high blood pressure	24.4%	48	24.5%
Percentage of persons reporting heart disease	7.9%	21	6.9%
Percentage of persons reporting osteoporosis	5.9%	22	5.3%
Percentage of persons reporting arthritis	21.0%	33	19.8%
Percentage of persons overweight	28.4%	73	32.5%
Percentage of females overweight	23.4%	59	24.6%
Percentage of males overweight	33.3%	73	40.6%
Percentage of persons obese	16.2%	57	17.3%
Percentage of females obese	18.8%	43	17.2%
Percentage of males obese	13.8%	63	17.4%
Cancer incidence per 100,000 population	690.1	21	522.0
Cancer incidence per 100,000 females	702.2	14	468.1
Cancer incidence per 100,000 males	678.2	35	577.0
Poor dental health	4.0%	67	5.6%
Notifications of Pertussis per 1,000 population	0.5	66	0.8
Notifications of Influenza per 1,000 population	0.4	70	1.1
Notifications of Chlamydia per 1,000 population	3.5	16	3.5

Health behaviours

	LGA measure	Rank among LGAs	Victoria measure
Percentage of persons 18+ who are current smokers	15.8%	42	15.7%
Percentage of females 18+ who are current smokers	11.9%	56	12.9%
Percentage of males 18+ who are current smokers	19.7%	30	18.5%
Percentage of persons at risk of short-term harm from alcohol consumption	13.8%	17	9.1%
Percentage of persons who do not meet fruit and vegetable dietary guidelines	45.3%	69	51.1%
Percentage of females who do not meet fruit and vegetable dietary guidelines	44.7%	49	45.5%
Percentage of males who do not meet fruit and vegetable dietary guidelines	46.8%	73	56.9%
Percentage of persons who drink soft drink every day	20.4%	21	15.9%
Percentage of persons who share a meal with family at least 5 days per week	66.3%	56	66.3%
Percentage of persons who do not meet physical activity guidelines	31.9%	26	32.1%
Percentage of females who do not meet physical activity guidelines	27.7%	57	33.6%
Percentage of males who do not meet physical activity guidelines	34.6%	14	30.4%

Percentage of persons who sit for at least 7 hours per day	23.5%	51	32.6%
Percentage of persons who visit a green space at least once per week	46.9%	44	50.7%
Percentage of breast cancer screening participation	61.3%	11	54.6%
Percentage of cervical cancer screening participation	68.2%	6	60.2%
Percentage of bowel cancer screening participation	37.8%	42	36.5%

Children and young person characteristics

	LGA measure	Rank among LGAs	Victoria measure
Low birth weight babies	5.0%	72	6.6%
Percentage of infants fully breastfed at three months	51.1%	46	51.4%
Percentage of children fully immunised at 24–27	95.4%	19	91.7%
Percentage of children attending 3 year old maternal and child health checks	58.1%	67	64.4%
Kindergarten participation rate	100.0%	NA	98.0%
Percentage of children with kindergarten subsidy	37.2%	26	24.6%
Percentage of children with emotional or behavioural problems at school entry	4.1%	37	4.3%
Percentage of children with speech or language problems at school entry	17.5%	22	13.8%
Percentage of adolescents who report being recently bullied	20.8%	17	17.9%
Percentage of children developmentally vulnerable in one or more domains	22.4%	24	19.5%
Percentage of children developmentally vulnerable in two or more domains	12.7%	16	9.5%
Rate of substantiated child abuse per 1,000 population	12.3	12	6.7
Rate of children on child protection orders per 1,000 population	8.7	24	5.2
Rate of children in out of home care per 1,000 population	4.8	38	4.6

Aged and disability characteristics

	LGA measure	Rank among LGAs	Victoria measure
Percentage of population with need for assistance with core activity	6.3%	20	5.0%
People with severe and profound disability living in the community (all ages)	4.3%	39	4.0%

People with severe and profound disability living in the community (65+)	9.9%	75	13.7%
Disability support pension recipients per 1,000 eligible population	85.5	21	54.9
Percentage of persons aged 75+ who live alone	41.6%	12	35.9%
Proportion who are female	76.4%	9	73.9%
Proportion who are male	23.6%	71	26.1%
Aged care places (high care) per 1,000 eligible population	40.9	39	40.9
Aged care places (low care) per 1,000 eligible population	57.3	11	44.4
Age pension recipients per 1,000 eligible population	700.5	51	694.3

Life expectancy and wellbeing

	LGA measure	Rank among LGAs	Victoria measure
Male life expectancy	78.3	54	80.3
Female life expectancy	83.7	46	84.4
Percentage persons reporting fair or poor health	9.3%	76	15.9%
Percentage of females reporting fair or poor health	9.5%	67	16.2%
Percentage of males reporting fair or poor health	8.5%	76	15.6%
Percentage of persons reporting a high/very high degree of psychological distress	8.1%	55	11.1%
Percentage of persons sleeping less than 7 hours per day	28.7%	51	31.5%
Percentage persons with adequate work-life balance	56.8%	14	53.1%

Injury and mortality

	LGA measure	Rank among LGAs	Victoria measure
Unintentional injuries treated in hospital per 1,000 population	26.1	78	59.1
Intentional injuries treated in hospital per 1,000 population	1.4	76	3.1
Percentage of unintentional injuries due to falls	42.4%	12	37.3%
Indirect standardised death rate per 100,000 population	6.9	5	5.6
Avoidable deaths per 100,000 population, 0–74 years, due to all causes	179.3	30	148.2
Avoidable deaths per 100,000 population, 0–74 years, due to cancer	58.9	59	61.4
Avoidable deaths per 100,000 population, 0–74 years, due to cardiovascular diseases	40.9	46	39.8
Avoidable deaths per 100,000 population, 0–74 years, due to respiratory diseases	11.1	27	8.4

4 Service system

Services and access

	LGA measure	Rank among LGAs	Victoria measure
Medicare Local that LGA is located in	Barwon		
Primary care partnership	G21 Health and Wellbeing Pillar		
Number of hospitals/health services	2	NA	305
General practitioners per 1,000 population	1.1	38	1.2
General practice clinics per 1,000 population	0.4	67	0.5
Dental service sites per 1,000 population	0.1	48	0.2
Allied health service sites per 1,000 population	0.7	27	0.5
Pharmacies per 1,000 population	0.2	45	0.2
Number of schools	17	NA	2,238
Percentage of population near to public transport	41.2%	47	74.2%
Percentage of population with private health insurance	36.6%	53	48.0%

Hospital utilisation

	LGA measure	Rank among LGAs	Victoria measure
Hospital inpatient separations per 1,000 population	425.9	45	419.8
Percentage of inpatient separations in private hospital	19.8%	61	39.4%
Main public hospital attended	Colac Area Health		
Separations from most frequently attended public hospital	59.2%	NA	NA
Average length of stay, public hospital inpatients (days)	3.1	48	3.2
Average length of stay, total hospital inpatients (days)	3.0	32	2.9
Per annum change in hospital inpatient separations, 2002–03 to 2012–13	1.09%	63	2.76%
Projected per annum change in separations, 2012–13 to 2021–22	0.36%	52	2.78%
Ambulatory care sensitive conditions (ACSC) – admission rate per 1,000 population	36.3	50	36.1
ACSC – average length of stay (days)	5.0	52	5.1
Ambulatory Care Sensitive Conditions (ACSC) – acute admissions per 1,000 population	14.3	29	12.7
ACSC – chronic admissions per 1,000 population	22.2	54	23.5
ACSC – vaccine preventable admissions per 1,000 population	0.3	75	0.9
Emergency Department presentations per 1000 population	50.1	79	258.8

ED presentations which are primary care type per 1000 population	12.2	79	107.5
--	------	----	-------

Other service utilisation

	LGA measure	Rank among LGAs	Victoria measure
GP attendances per 1,000 population – male	3,968.1	51	4,633.4
GP attendances per 1,000 population – female	5,443.5	57	6,257.0
GP attendances per 1,000 population – total	4,695.7	54	5,452.1
HACC clients aged 0–69 per 1,000 target	241.5	13	142.3
HACC clients aged 70 and over per 1,000 target population	523.7	27	407.9
Drug and alcohol clients per 1,000 population	8.8	18	5.8
Registered mental health clients per 1,000 population	13.6	32	11.1